

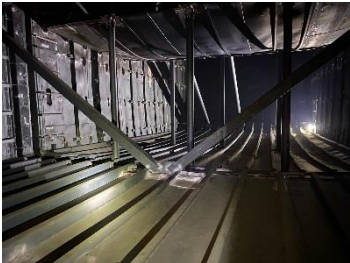
Confined Spaces 密閉空間

Guidance Note 指引

This guidance note covers the main requirements when working in Confined Spaces



FGD Absorber



BPPS HRSG



Condenser

Planning the Job

- ✓ If possible avoid entry by doing the work from outside the confined space
- ✓ All confined space workers shall have the “confined space worker” card as required by HK legislation
- ✓ No persons shall enter a confined space without a valid entry permit
- ✓ Prepare gas testing equipment, ventilation, lighting
- ✓ Ensure that there are emergency arrangements planned before work starts

Personnel

- ✓ Ensure a trained confined space attendant remains outside the confined space at **ALL TIMES**.
- ✓ Only persons who have been specially trained and are medically fit to work can be involved in confined space entry and confined space rescue.
- ✓ Authorized Gas Testers will carry out atmospheric tests using special detection equipment.
- ✓ Confined space entrants shall be provided with individual gas monitor.

PPE

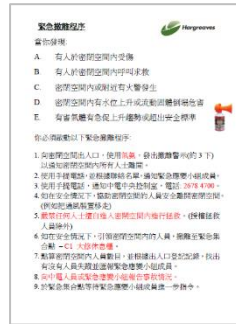


- × NEVER ENTER A CONFINED SPACE ALONE
- × NEVER PUT PURE OXYGEN INTO THE AIR. THIS INCREASES THE RISK OF FIRE OR EXPLOSION
- × NEVER USE FUELLED ENGINES IN CONFINED SPACE OR CLOSE TO CONFINED SPACE ENTRANCE. CARBON MONOXIDE IS VERY DANGEROUS.

IF YOU DON'T FEEL COMFORTABLE TO ENTER A CONFINED SPACE DO NOT ENTER.

Confined Spaces Requirements

Safety Document



Confined Space Risk Assessment Report
密閉空間風險評估

Confined Space Entry Certificate
密閉空間進入證

Evacuation Procedures
緊急撤離程序

Confined Space Rescue Plan
拯救計劃

Safety System and Equipment



Double-Card System
雙卡制進出管制

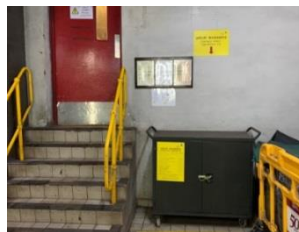


Force Ventilation
強制性通風系統



Gases Monitoring System
強制性通風系統

Emergency Equipment 緊急應變設備



Life Saving Rules

Energy Isolation

Verify isolation and zero energy before work begins



- I have identified all energy sources
- I confirm that hazardous energy sources have been isolated, locked, and tagged
- I have checked there is zero energy and tested for residual or stored energy

Work Authorisation

Work with a valid permit when required



- I have confirmed if a permit is required
- I am authorised to perform the work
- I understand the permit
- I have confirmed that hazards are controlled and it is safe to start
- I stop and reassess if conditions change

Confined Space

Obtain authorisation before entering a confined space



- I confirm energy sources are isolated
- I confirm the atmosphere has been tested and is monitored
- I check and use my breathing apparatus when required
- I confirm there is an attendant standing by
- I confirm a rescue plan is in place
- I obtain authorisation to enter