

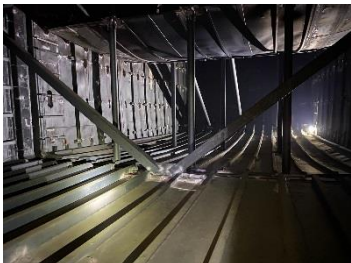
Confined Spaces 密閉空間

Guidance Note 指引

This guidance note covers the main requirements when working in Confined Spaces



FGD Absorber



BPPS HRSG

Planning the Job

- ✓ If possible avoid entry by doing the work from outside the confined space
- ✓ All confined space workers shall have the “confined space worker” card as required by HK legislation
- ✓ No persons shall enter a confined space without a valid entry permit
- ✓ Prepare gas testing equipment, ventilation, lighting
- ✓ Ensure that there are emergency arrangements planned before work starts

Personnel

- ✓ Ensure a trained confined space attendant remains outside the confined space at **ALL TIMES**.
- ✓ Only persons who have been specially trained and are medically fit to work can be involved in confined space entry and confined space rescue.
- ✓ Authorized Gas Testers will carry out atmospheric tests using special detection equipment.
- ✓ Confined space entrants shall be trained with dead man alarm.

PPE



Confined Space

Obtain authorisation before entering a confined space



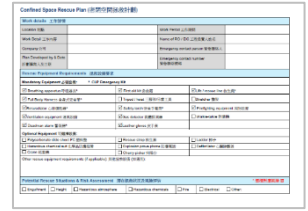
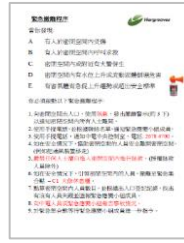
- I confirm energy sources are isolated
- I confirm the atmosphere has been tested and is monitored
- I check and use my breathing apparatus when required
- I confirm there is an attendant standing by
- I confirm a rescue plan is in place
- I obtain authorisation to enter

- ✗ NEVER ENTER A CONFINED SPACE ALONE
- ✗ NEVER TRY TO ‘SWEETEN’ THE AIR WITH OXYGEN AS THIS INCREASE THE RISK OF FIRE OR EXPLOSION
- ✗ NEVER USE FUELLED ENGINES IN CONFINED SPACE OR CLOSE TO CONFINED SPACE ENTRANCE AND VENTILATION. CARBON MONOXIDE IS VERY DANGEROUS.

IF YOU DON'T FEEL COMFORTABLE TO ENTER A CONFINED SPACE DO NOT ENTER.

Confined Spaces Requirements

Safety Document



Confined Space Risk Assessment Report
密閉空間風險評估

Confined Space Entry Certificate
密閉空間進入證

Evacuation Procedures
緊急撤離程序

Confined Space Rescue Plan
拯救計劃

Safety System and Site Setup



Double-Card System
雙卡制進出管制



CCTV Monitoring and Recording System
實時影像監測及記錄系統



Force Ventilation and Gas Monitoring System
強制性通風及氣體監察系統

氣體探測器停止運行或警報響起，所有人員須立即撤離。
All personnel shall evacuate immediately when the gas detector/alarms are not function properly.
機械通風設備停止運行時，所有人員須立即撤離。
All personnel shall evacuate immediately when the mechanical ventilation equipment is not function properly.

Emergency Equipment 緊急應變設備

